

ROAD TRIP Quilt



Size: Throw (43½" × 61")

tamarakatedesign.com



A throw size quilt with big impact and minimal work, Road Trip is an easy weekend project.

Strategic cutting of the large scale prints from my Cross Country fabric collection, paired with a bit of playful sashing result in this quick make.

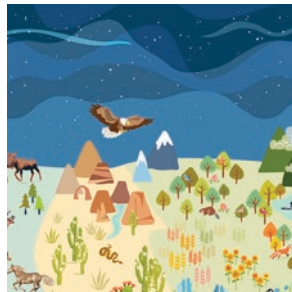
SKILL LEVEL: Beginner

QUILT SIZE: THROW 43½" × 61"

FABRIC REQUIREMENTS: (ALL MEASUREMENTS BASED ON 42" WIDE FABRIC)



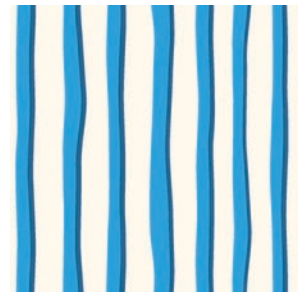
54505DP-1
CROSS COUNTRY VISIT
30" × 42" PANEL



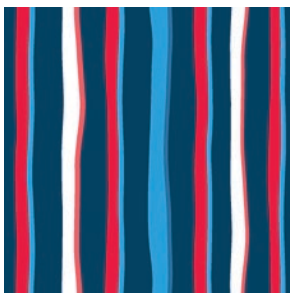
54506DP-1
WILD AND FREE
1⅓ YARD



54507D-1
QUILT SHOW
½ YARD



54510D-8
STRIPES
½ YARD - SASHING



54510D-1
STRIPES
½ YARD - BINDING

• **BACKING:** 4 YARDS **OR** 2 YARDS 108" WIDEBACK

ALSO REQUIRED:

46" × 64" QUILT BATTING, ROTARY CUTTER, CUTTING MAT,
LONG ACRYLIC RULER, THREAD, PINS.

Fabrics in the cover quilt are from my CROSS COUNTRY collection with Windham Fabrics.

FOR PERSONAL USE ONLY. Quilt design & instructions copyright Tamara Kate Design © 2024. All rights reserved.
No part of this pattern may be reproduced in any form without the express written consent of the author.

ROAD TRIP QUILT

NOTE: For best results, read through instructions prior to starting.

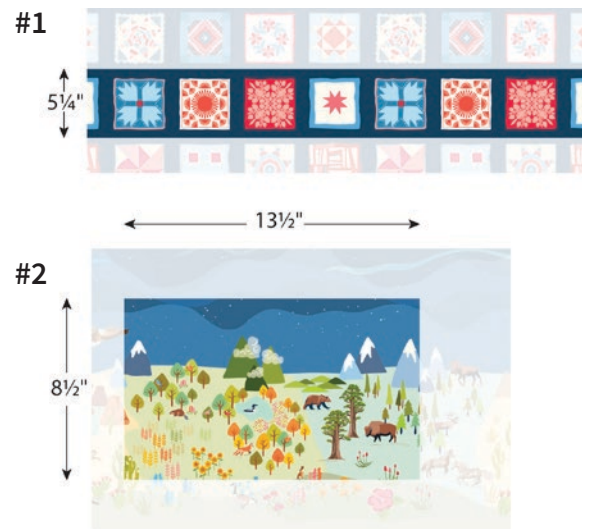
- All seam allowances are $\frac{1}{4}$ "
- wof refers to width of fabric.

TIPS:

- Accuracy in cutting and piecing will ensure all the strips and points match up.
- Do NOT pull on fabric while sewing, as this may cause some stretching.

CUTTING:

- Binding: Cut 6 strips $2\frac{1}{4}$ " (or $2\frac{1}{2}$ ", if desired) \times wof.
- Backing: Cut two pieces $65" \times$ wof.
OR if using wideback, cut one piece $48" \times 65"$.
- Sashing: Cut 10 strips $1\frac{1}{2}" \times$ wof.
From 1 of these strips, cut 4 pieces $8\frac{1}{2}"$ long.
- QUILT SHOW: Cut 2 strips $5\frac{1}{4}" \times$ wof, centering each strip over a row of printed blocks (#1).
- WILD & FREE: Cut 6 pieces $8\frac{1}{2}" \times 13\frac{1}{2}"$ centering each piece over a different area of landscape (#2).



PIECING:

- Sew together 2 horizontal rows, each using 2 of the $8\frac{1}{2}"$ -long sashing pieces between 3 WILD AND FREE rectangles (#3).
- Pinning for accuracy, sew together 2 rows, each using a $5\frac{1}{4}"$ -high QUILT SHOW strip between 2 wof-long sashing strips (#4).
- Sew together 3 of the remaining sashing strips, end to end. Cut in half.
- Follow **ASSEMBLY** to piece together the quilt top, adding a wof-long sashing strip at the top and bottom. Add the 2 longer sashing pieces to the right and left as the final step.

QUILT ASSEMBLY: Layer backing, batting and quilt top. Baste or pin. Quilt as desired. Square up the finished quilt top.

BINDING: Join binding strips together and bind in your preferred fashion.

ASSEMBLY

